



Capabilities Statement

Competitive Advantage

- Registered Quality System (AS9100 & ISO9001)
- Over 50 Years Operating History
- SBA Small Business & HUBzone Certified Company
- Proven Management Staff
- Integrated And Vast Supply Chain
- Short Lead Time Prototypes
- Extremely Responsive to Customer Needs

Equipment

Automatic Screw Machines	50
Swiss CNC	7
CNC Turning	50
CNC Milling	48
Secondary & Shop Support	90
Production Grinders / Hones	11

Turning

- Screw Machines: single- and multi-spindle
- CNC Lathes: 2- & 4-axis; Driven tools Y-axis
- CNC Swiss screw machines

Unconventional Machining

- Electrical Discharge Machining (EDM), Laser Cutting, & Waterjet

Website

www.alardengineering.com

Quality System & Approvals

- ITAR, EAR, DFARS, SAM, EXOSTAR Registered
- DLA Troop Support Class 2 Threaded Fastener Qualified
- Source Inspection Delegated (Dock-to-Stock)
- Statistical Process Control Network
- Automated Coordinate Measuring Machines (CMM)
- OASIS and Keyence Shadow Optical Measuring Devices

Facilities (sq.ft)

Buildings (5 total)	50,000
Manufacturing	38,000
General Offices	5,000
Shipping & Receiving	5,000
Inspection & QC	1,700
Chemical Storage	300

Milling

- 3-, 4-, & 5-Axis machines
- Trunnion Table 5-Axis, 5-Sided Machining
- CNC Pallet Changes; Pallet Pools
- Vertical & Horizontal Mills

Full 2nd Op and Assembly Capabilities

- TIG Welding, Grinding, Honing, Deburring, Polishing, Tumbling, Riveting, Helicoils, Press Bushings, amongst others

Address & Phone

1629 W 132nd St, Gardena, CA 90249

310.323.4374



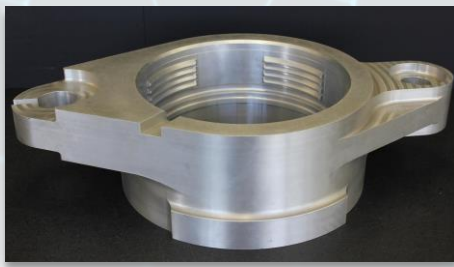
ALARD ENGINEERING

Notable Parts and Machines

Parts

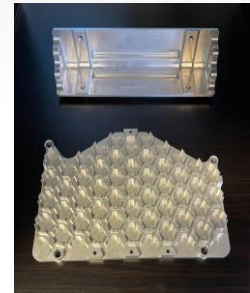
Connectors

Manifolds / Actuator Components



Inconel

Electromagnetic / Fusion



Machines

Turning

Milling

TSUGAMI	B0205-II	5-Axis	Mori Seiki	NMV-5000 DCG	29" x 20" x 20"
Mori-Seiki	NLX-2500SY	16" x 10"	Mori Seiki	NH-50000/40	29" x 29" x 34"
Okuma	LU3000EX	12" x 24"	HAAS	SUPER VF-6SS	64" x 32" x 30"

Key Contacts

sales@alardmachine.com

Address & Phone

1629 W 132nd St, Gardena, CA 90249
310.323.4374